

smartstuff™

furniture for kids.



Bunk Bed Assembly Instructions

Thank you for your purchase of a smartstuff bunk bed. smartstuff bunk beds are designed, engineered and certified to meet the safety guidelines of the Consumer Product Safety Commission as well as ASTM International standards. Keep these instructions for future reference.

READ THESE INSTRUCTIONS CAREFULLY BEFORE ASSEMBLING THIS PRODUCT AND UNDERSTAND THESE SAFETY WARNINGS:

1. Follow the information on the WARNING LABEL appearing on the upper bunk end structure and on the carton. DO NOT REMOVE WARNING LABEL FROM BED
2. Always use the specified mattress size and mattress support to help prevent the likelihood of entrapment or falls. The slat roll provided must be used with this bed.
3. Surface of the mattress must be at least 5 inches below the upper edge of the guard rails.
4. Do not allow children under 6 years of age to use the upper bunk.
5. Only one person at a time is permitted on the upper bunk.
6. Periodically check to ensure that the guardrails, ladder, and other components are in their proper position, free from damage. Also, make sure the connectors are tight and secure.
7. Do not allow horseplay on or under the bed and prohibit jumping on the bed.
8. Always use the ladder for entering and leaving the upper bunk.
9. Do not use substitute parts. Contact your smartstuff dealer or Universal Furniture for replacement parts.
10. Use of a night light may provide an added safety precaution for a child using the upper bunk.
11. Use guardrails on both sides of the upper bunk.
12. If the bunk bed is placed next to a wall, the guard rail that extends the full length of the bed should be placed against the wall to prevent entrapment between the bed and the wall.
13. The use of a water mattress or sleep flotation mattress is prohibited.
14. STRANGULATION HAZARD—Never attach or hang items to any part of the bunk bed that is not designed for use with the bed; for example, but not limited to: hooks, belts, and jump ropes.
15. Keep these instructions for future use.

Bunk beds have these labels permanently attached as required for safety guidelines.

4/6 bunk warning label



WARNING

To help prevent serious injuries from entrapment or falls:

- Never allow a child under 6 years on the upper bunk.
- Use only mattress which is 74" - 75" long and 52 1/2" - 53 1/2" wide on the upper bunk.
- Ensure the mattress thickness does not exceed 10" and mattress is at least 5" below the upper edge of the guard rails.
- Use guard rails on both sides of the upper bunk.
- Prohibit horseplay on or under bed(s).
- Prohibit more than one person on the upper bunk.
- Use a ladder for entering and leaving upper bunk.

STRANGULATION HAZARD—Never attach or hang items to any part of the bunk bed that are not designed for use with the bed; for example, but not limited to: hooks, belts and jump ropes.

DO NOT REMOVE THIS LABEL

3/3 bunk warning label



WARNING

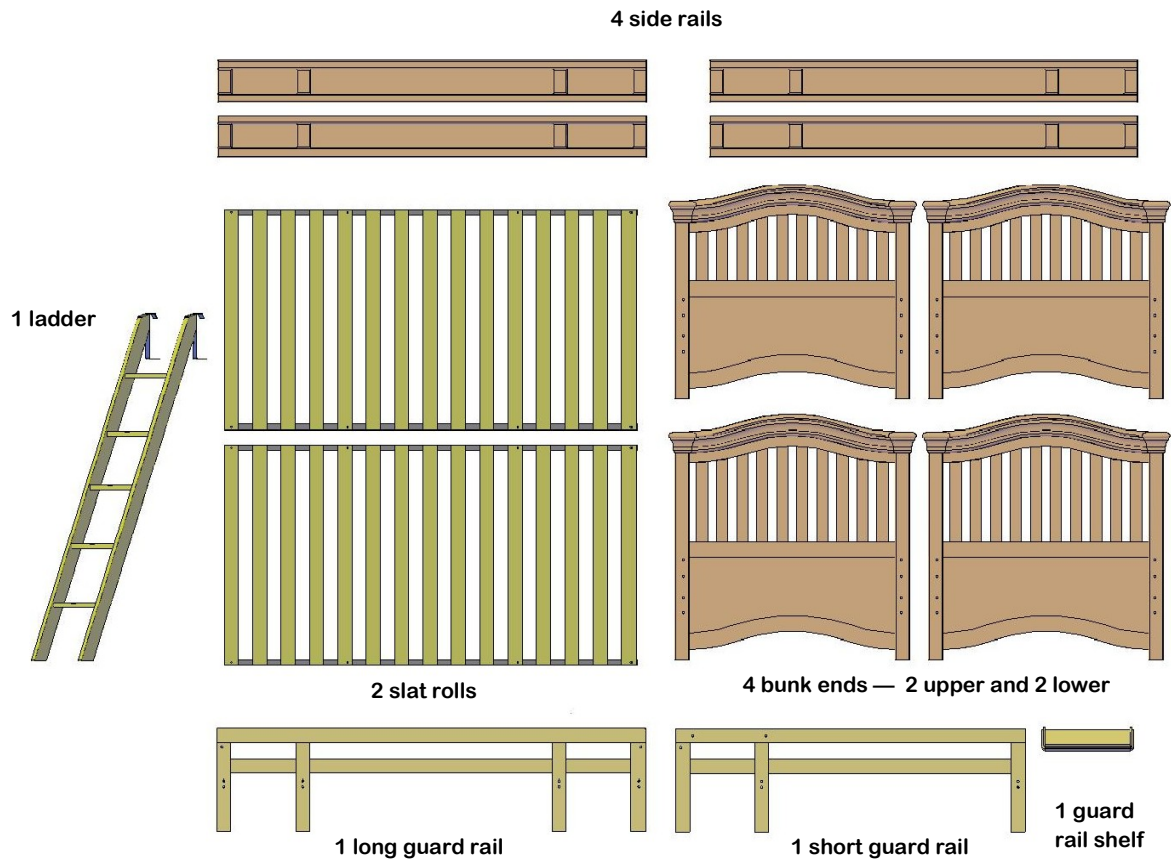
To help prevent serious injuries from entrapment or falls:

- Never allow a child under 6 years on the upper bunk.
- Use only mattress which is 74" - 75" long and 37 1/2" - 38 1/2" wide on the upper bunk.
- Ensure the mattress thickness does not exceed 10" and mattress is at least 5" below the upper edge of the guard rails.
- Use guard rails on both sides of the upper bunk.
- Prohibit horseplay on or under bed(s).
- Prohibit more than one person on the upper bunk.
- Use a ladder for entering and leaving upper bunk.

STRANGULATION HAZARD—Never attach or hang items to any part of the bunk bed that are not designed for use with the bed; for example, but not limited to: hooks, belts and jump ropes.

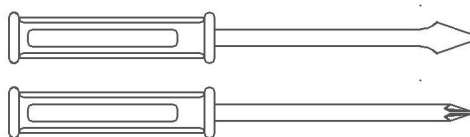
DO NOT REMOVE THIS LABEL

Identify the individual parts of the bunk bed for reference in assembling your bed. While the illustrations in this manual are generic, the assembly method is the same for all smartstuff bunks.



Take inventory of each part. Make sure that the proper quantity of each component is available. If any part is missing, please contact the retailer for service parts. If you find any part is defective, please contact your smartstuff retailer immediately. Do not use parts not supplied with this item for assembly. Give yourself ample room for assembly in the place where the bunk will reside. **Replacement parts, including additional guardrails, may be obtained from any of our Universal/smartstuff dealers.** Two people are required for safe assembly.

Tools:



1—Flat Head Screw Driver

1—Phillips Head Screw Driver

Identifying the hardware to be used for assembly of the bunk bed

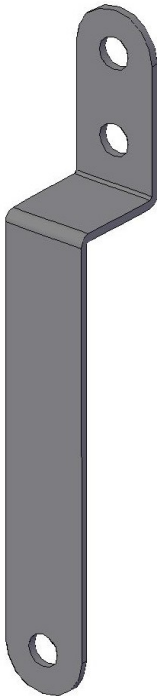
(2) allen wrenches



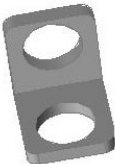
(16) allen head assembly bolts—A



(6) guard rail brackets



(3) guard rail L brackets

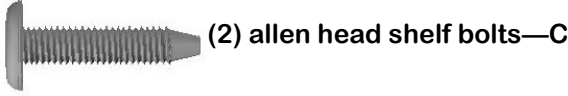


allen head cover bolts—B

(16 bolts and (16) female connectors

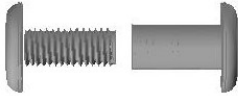


(16) side rail barrel nuts



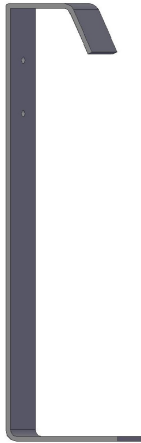
(2) allen head shelf bolts—C

(25) allen guard rail bolts—D



(15) female connectors

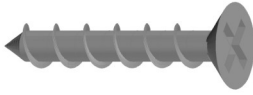
(2) ladder brackets



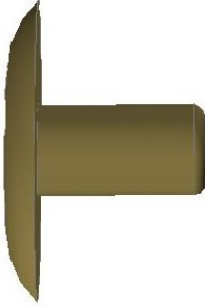
(4) metal alignment pins



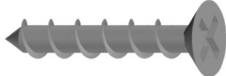
(16) # 8 X 1 1/4 wood screws



(4) mushroom caps

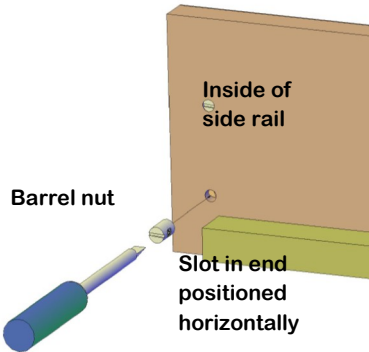


(4) # 8 X 1 wood screws for ladder



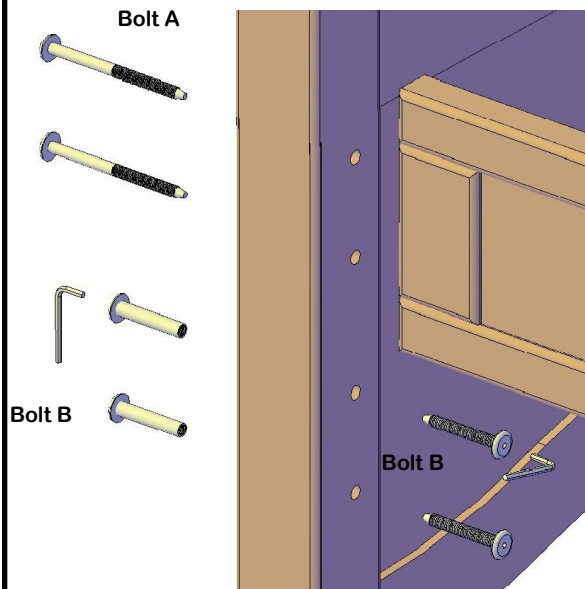
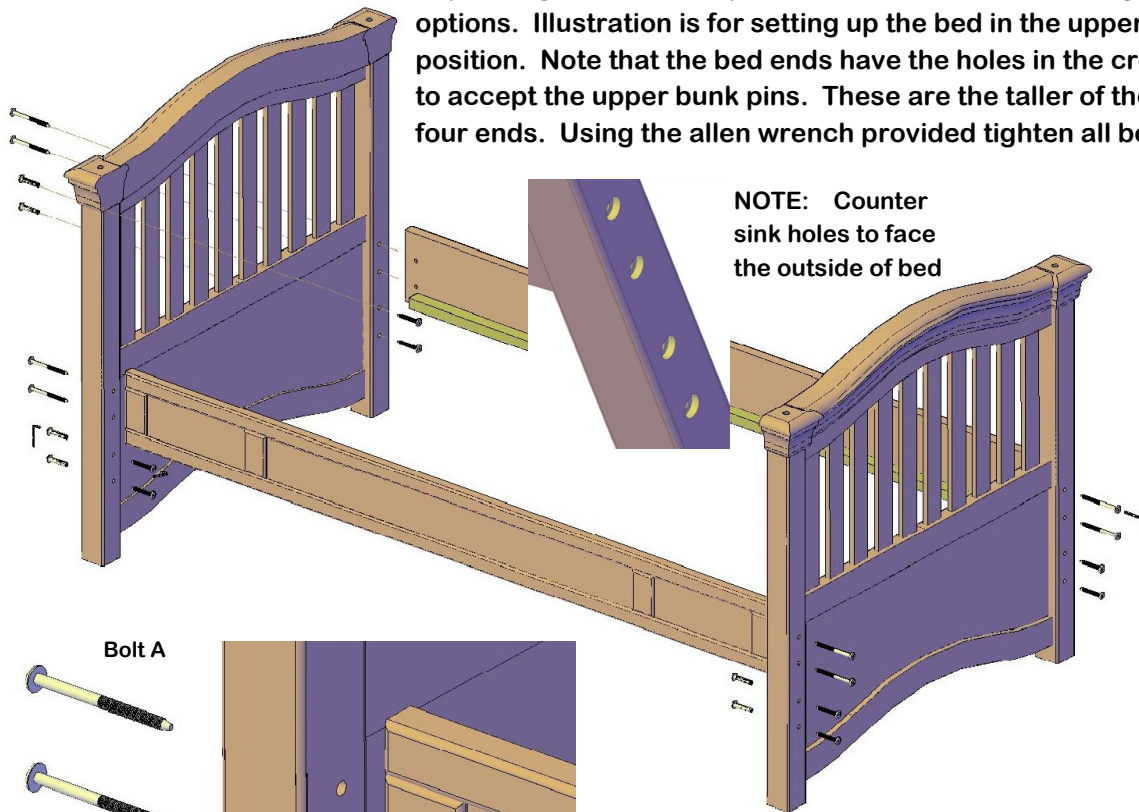
STEP 1.

Assembly of the lower bunk (2) person assembly



1. Using a flat head screwdriver, insert the barrel nuts into the inside of the side rails. Note how the slot in the barrel nut is in a horizontal position to align the threads to accept the connector bolts.

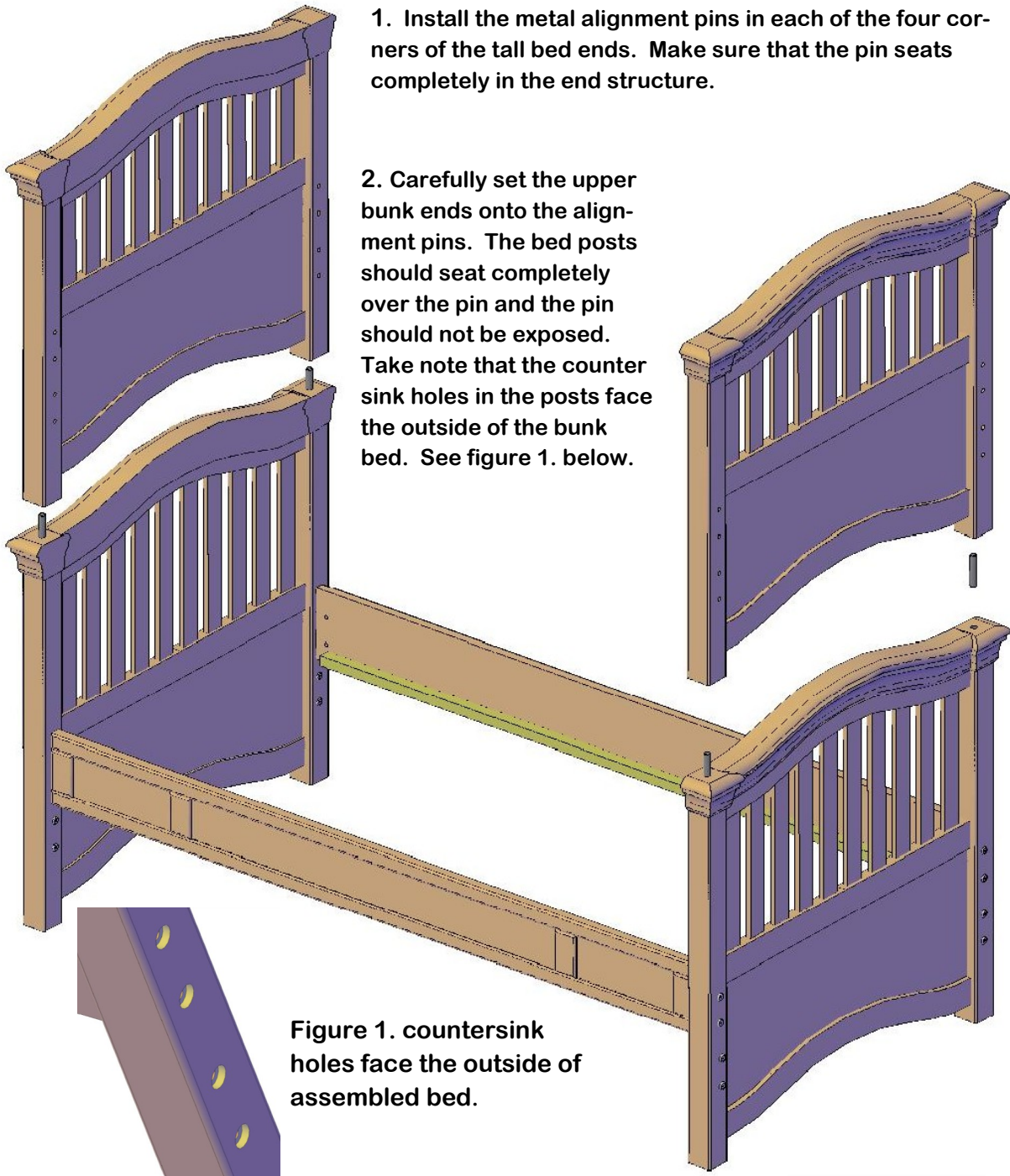
2. The lower bunk rails can be put in the upper position using the upper holes or lower position using the lower holes depending on customer preference or under bed storage options. Illustration is for setting up the bed in the upper position. Note that the bed ends have the holes in the crown to accept the upper bunk pins. These are the taller of the four ends. Using the allen wrench provided tighten all bolts.



3. Bolt A is the longest bolt and is used to attach the side rails. Bolt B and the B connector are only used to fill in the empty holes not used for the side rail attachment. Make sure when threading the bolt into the barrel nut that the barrel nut is positioned as shown in figure 1. above and the threads tighten easily.

STEP 2.

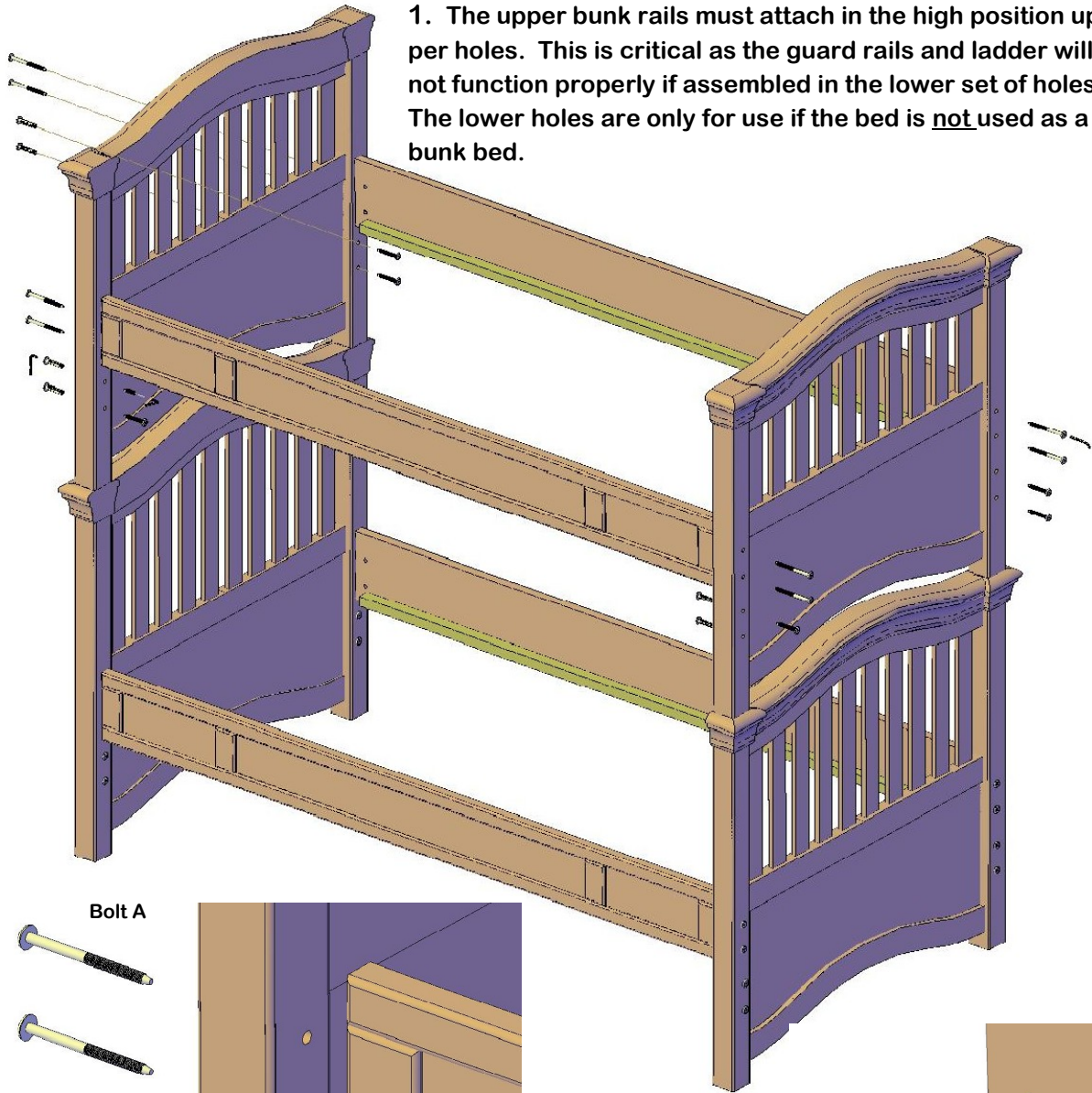
Assembly of the upper bunk (2) person assembly



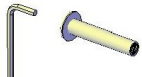
STEP 3.

Assembly of the upper bunk (2) person assembly

1. The upper bunk rails must attach in the high position upper holes. This is critical as the guard rails and ladder will not function properly if assembled in the lower set of holes. The lower holes are only for use if the bed is not used as a bunk bed.



Bolt A



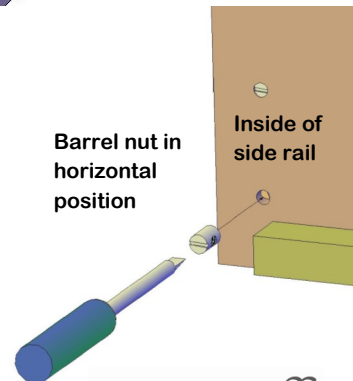
Bolt B



2. Using the same steps used on page 5 STEP 1., attach the upper side rails. Two person assembly required. Tighten all connections.

Barrel nut in horizontal position

Inside of side rail



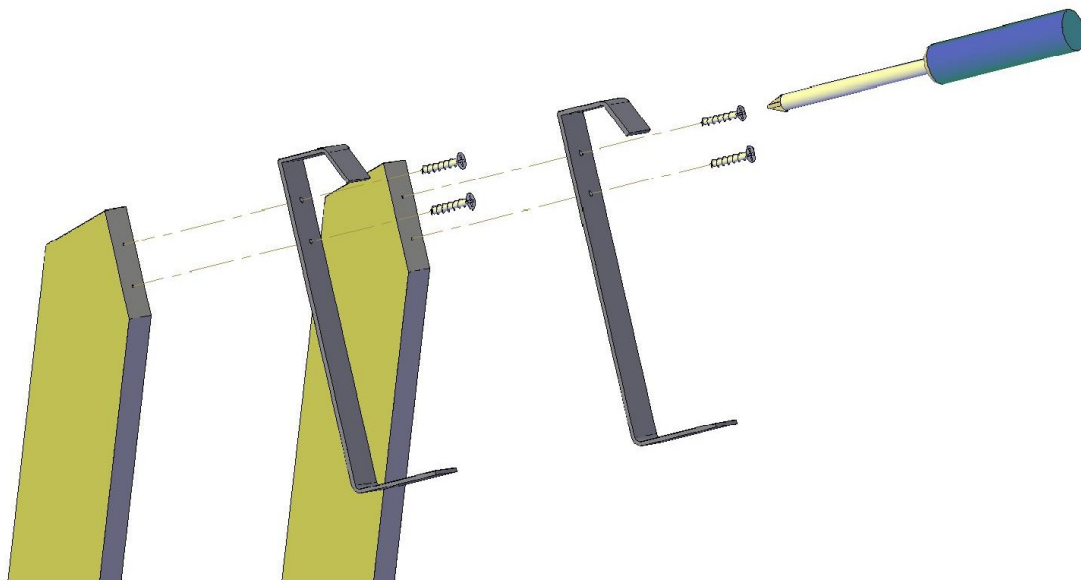
smartstuff™

STEP 4.

Assembly of the ladder brackets



1. At the top of the ladder there will be two pre drilled locator holes.
2. Position the two ladder brackets as shown in the illustration aligning the holes of the bracket with the pre drilled locator holes in the ladder..
3. Using a Phillips head screwdriver, attach the two brackets with the (4) #8 X 1 wood screws provided.

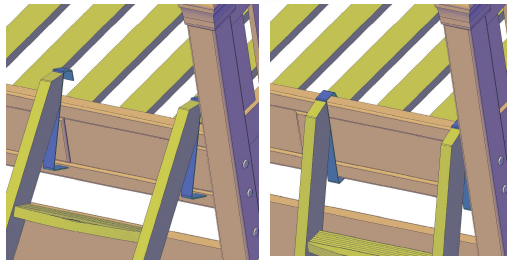


STEP 5.

Assembly of the slat roll (2) person assembly



1. Attach the slat roll with the nylon strip facing down. Extend the slats all the way to the ends. Screw the slats in place with the flat head wood screws provided. The ladder may be used to assist in slat roll assembly.



Rotate the ladder up as shown in the picture on the upper left. Drop the ladder down over the side rail. The ladder is ready for use.

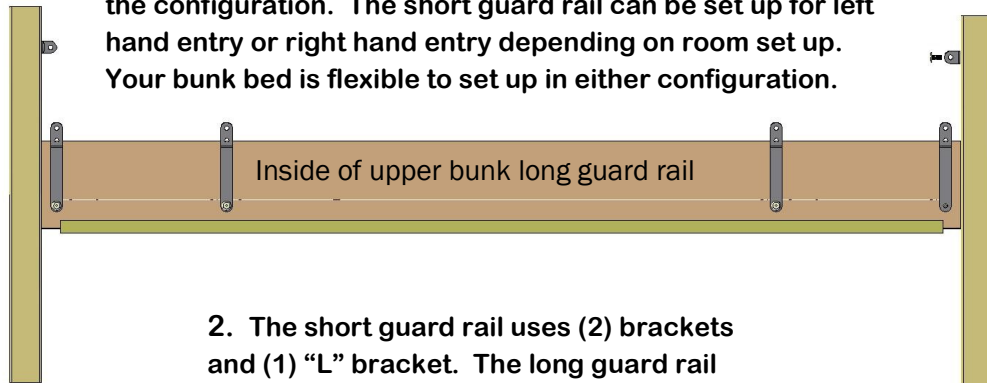
STEP 6.

Assembly of the guard rails (2) person assembly

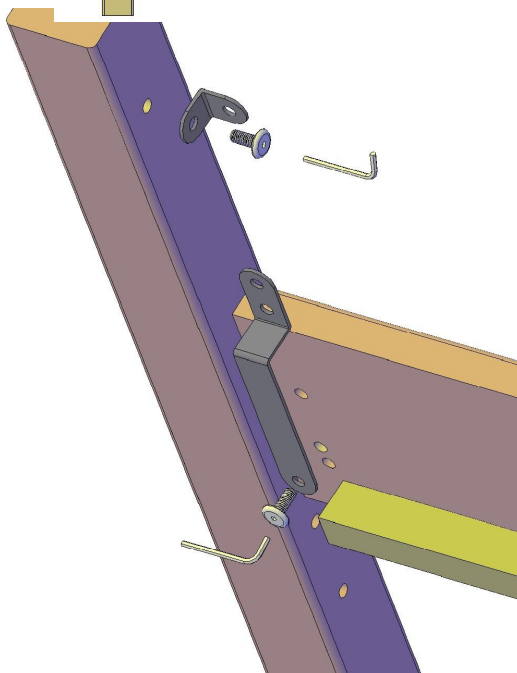
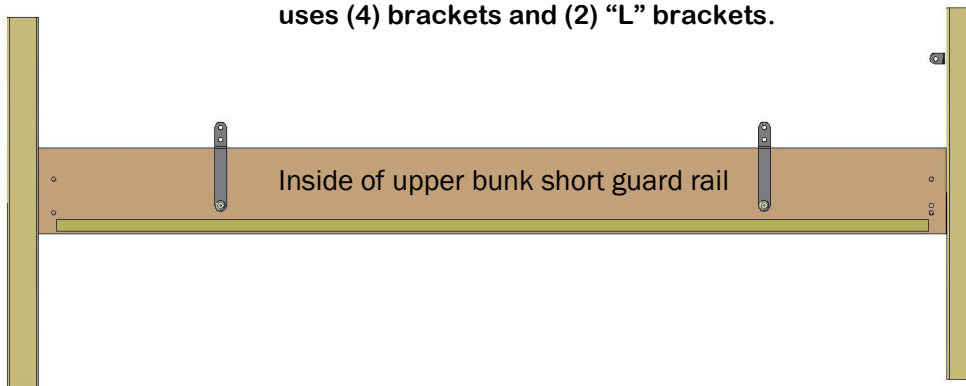
Attaching the angle brackets

1. The guard rails are interchangeable from side to side.

Determine which side the entrance ladder will be used on for the configuration. The short guard rail can be set up for left hand entry or right hand entry depending on room set up. Your bunk bed is flexible to set up in either configuration.



2. The short guard rail uses (2) brackets and (1) "L" bracket. The long guard rail uses (4) brackets and (2) "L" brackets.



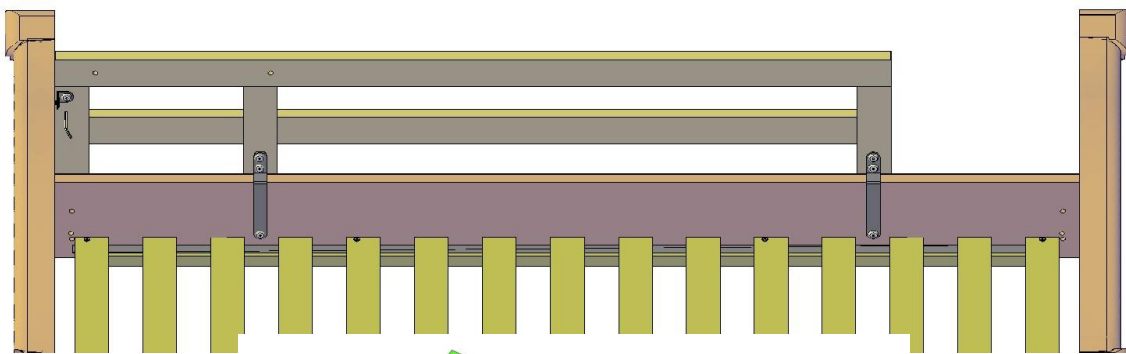
3. Attach the guard rail brackets to the inside of the side rails. Also attach the "L" brackets to the inside of the posts. Use the allen wrench provided and the 3/4" assembly bolt D. Your brackets should look like the illustration.

STEP 7.

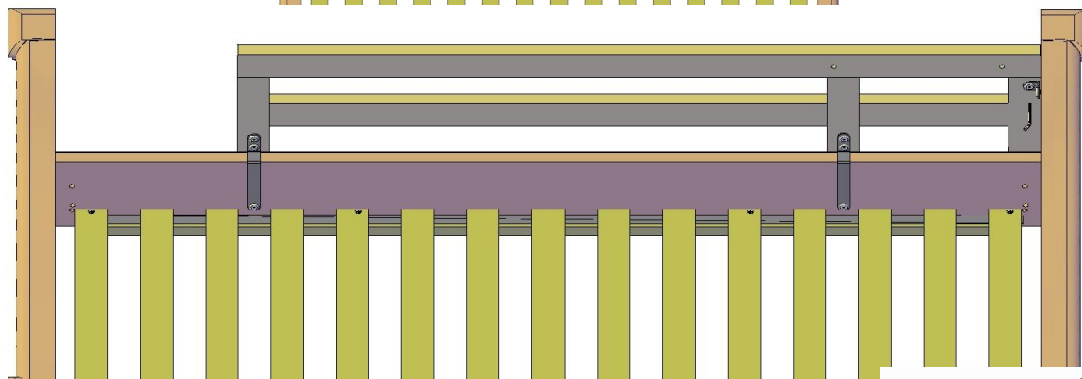
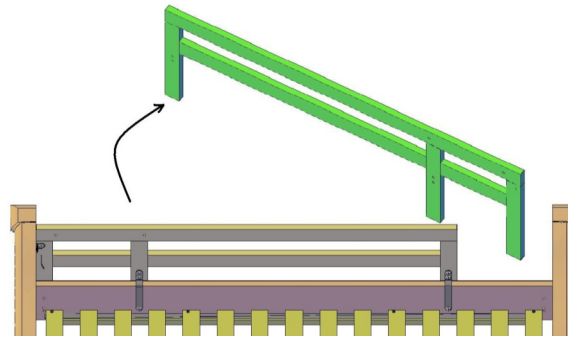
Assembly of the guard rails (2) person assembly

Attaching the guard rails

Determine the position of the short guard rail and where the ladder will be positioned now. Proceed to next page after making the determination of left or right entry, note the short guard rail rotates to make the left or right entry.

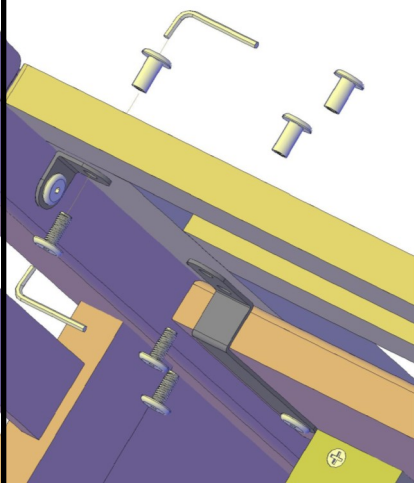
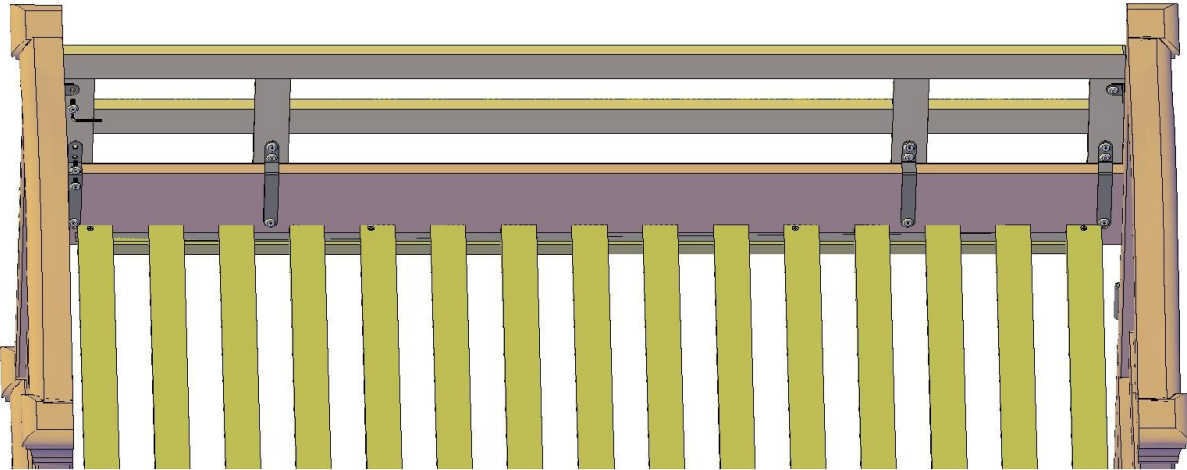


The short guard rail will have to rotate to determine left or right entry. This will assure the shelf is always away from the ladder.

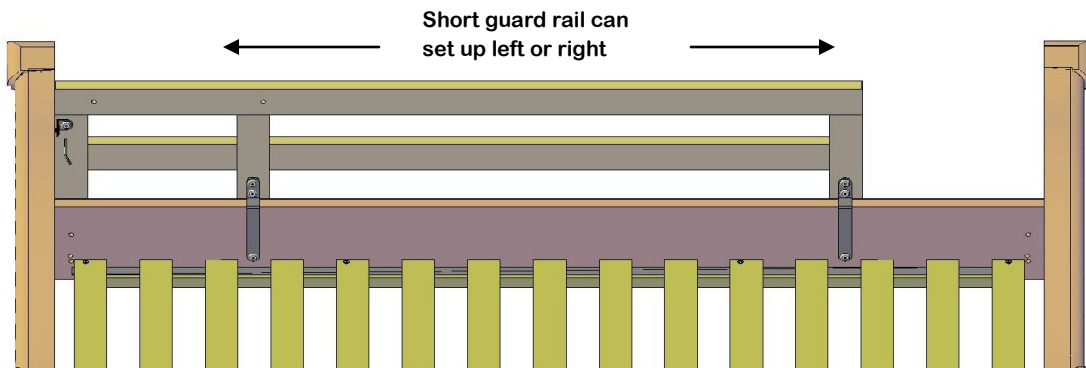


STEP 8.

Assembly of the guard rails (2) person assembly Attaching the guard rails

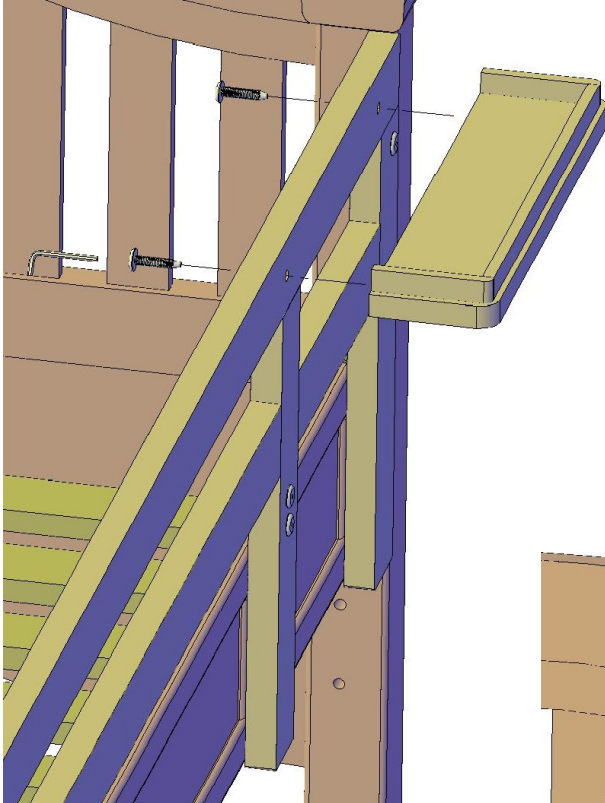


1. Using the connector bolt D attach the guard rails to the upper bunk brackets. Attach the upper post bracket first for support then the longer angle brackets on the side rail.
2. The guard rails are interchangeable from side to side. Determine which side the entrance ladder will be used on for the configuration. The short guard rail can be set up for left hand entry or right hand entry depending on room set up. Your bunk bed is flexible to set up in either way.
3. If bed will be placed next to the wall, the guard rail that runs the length of the bed must be placed against the wall to prevent entrapment between the bed and wall.



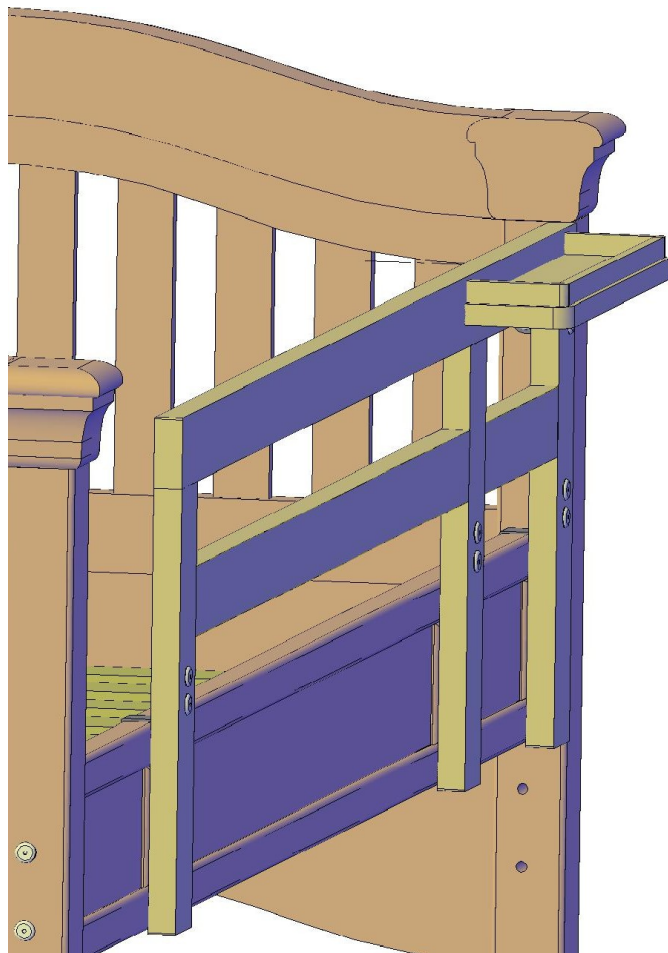
STEP 9.

Assembly of the guard rail shelf accessory



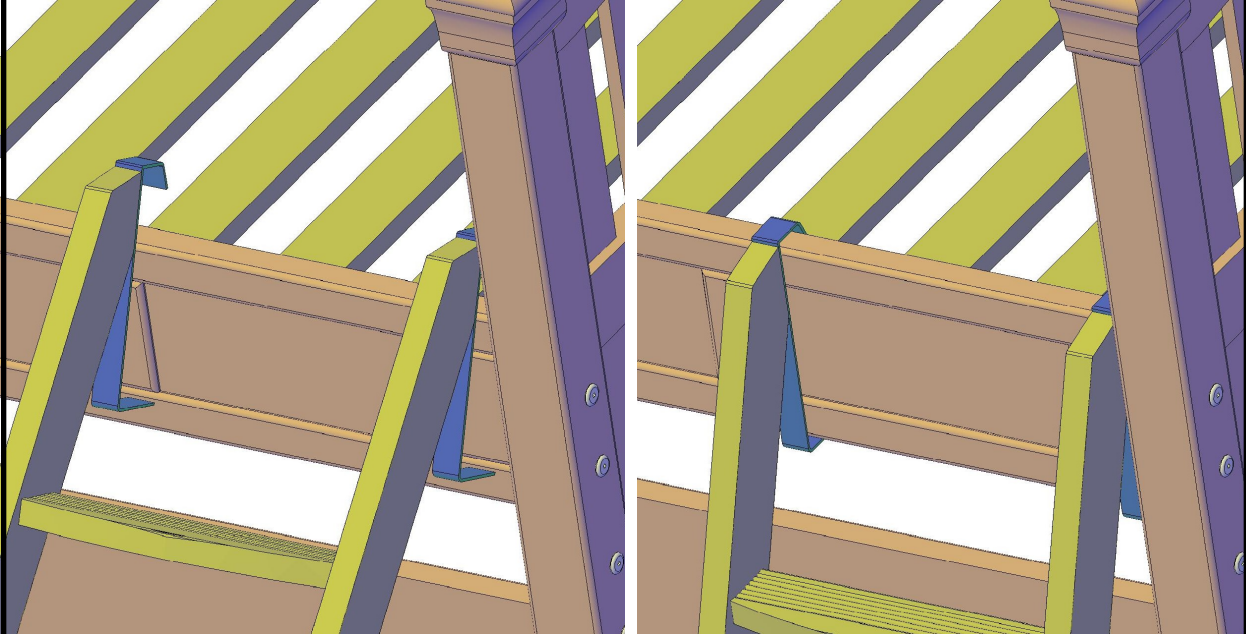
1. Using 2- "C" bolts, attach the shelf to the short guard rail. Attach the shelf to the outside of the bunk bed. Do not use the shelf for heavy objects or for any object than can fall and cause injury to the lower bunk occupant.

2. Place the shelf away from the Ladder opening to prevent knocking off any item on the shelf while entering or exiting the upper bunk.
3. **NOTE: it is not necessary to use the shelf feature. The shelf is offered as an accessory item and should be used in a responsible manner. Omitting the shelf will not in any way affect the performance of the bunk bed.**

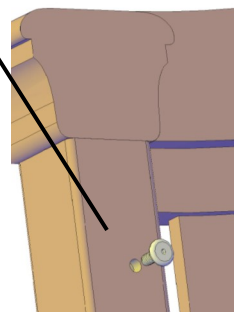


STEP 10.

Assembly of the ladder attachment



1. Rotate the ladder up as shown in the picture on the upper left. Drop the ladder down over the side rail. The ladder is ready for use.
2. Use the ladder for only entering and exiting the upper bunk.
3. Use caution when using the ladder and only one person at a time is permitted on the ladder.
4. The picture at left is the final assembled bunk ready for the mattress foundation



Plug the open hole in the post at ladder opening with bolt D

smartstuff™

STEP 11.

Installing a mattress foundation

Bedding specification for a twin 3/3:

The following mattress size must be used with this bunk bed:

MATTRESS: 74" - 75" LENGTH X 37 1/2" - 38 1/2" WIDTH X 10" THICKNESS (Max. Thickness)

1. The slat roll provided must be used with this bed. Do not substitute any other foundation for the slat roll as the bed is designed for stability and safety using the provided slat roll foundation.
2. It is not necessary to use a "bunky" board foundation with this item as the slat roll is designed to support the specified mattress above.
3. Be sure to maintain at least 5" of space from the top of the mattress to the top of the guard rail for maximum safety of the occupant of the upper bunk.

Bedding specification for a full 4/6:

The following mattress size must be used with this bunk bed:

MATTRESS: 74" - 75" LENGTH X 52 1/2" - 53 1/2" WIDTH X 10" THICKNESS (Max. Thickness)

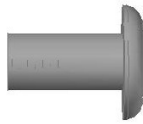
1. The slat roll provided must be used with this bed. Do not substitute any other foundation for the slat roll as the bed is designed for stability and safety using the provided slat roll foundation.
2. It is not necessary to use a "bunky" board foundation with this item as the slat roll is designed to support the specified mattress above.
3. Be sure to maintain at least 5" of space from the top of the mattress to the top of the guard rail for maximum safety of the occupant of the upper bunk.

4/6 Extension Kit Option

Hardware and Parts Listing



(8) Connector bolts and caps

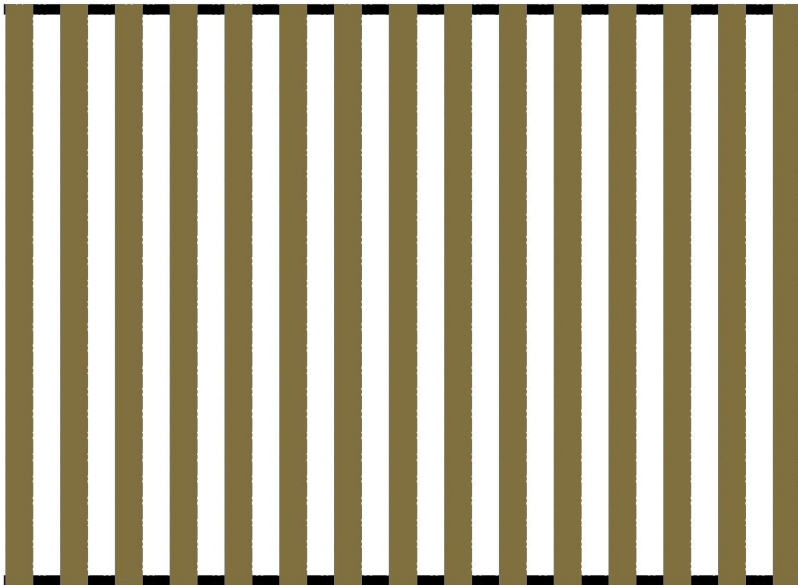
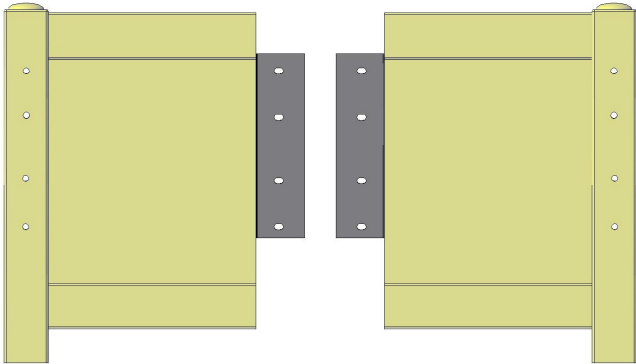


(8) spring washers (8) flat washers



(1) allen wrench

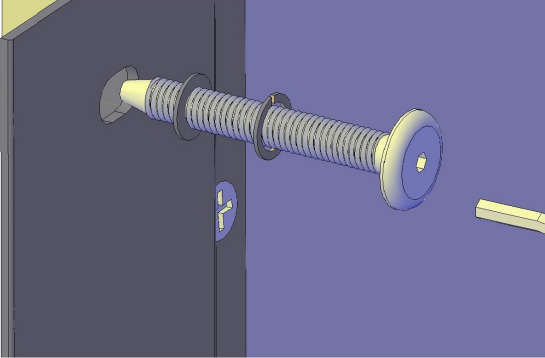
(2) extension ends (one left and one right)



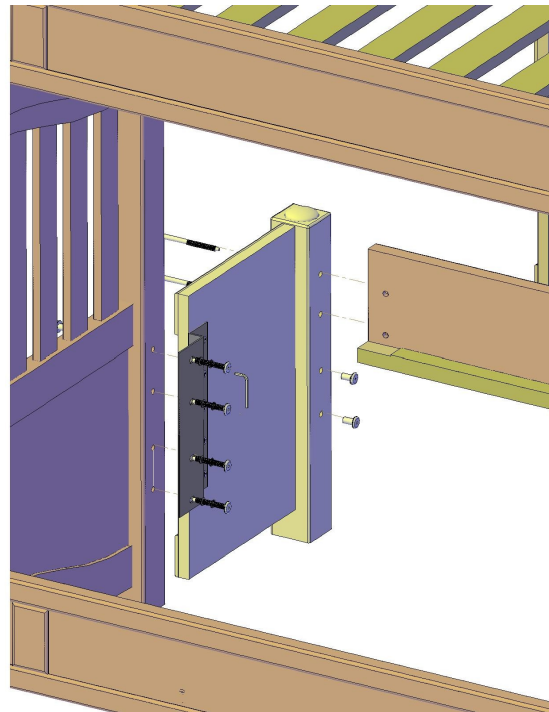
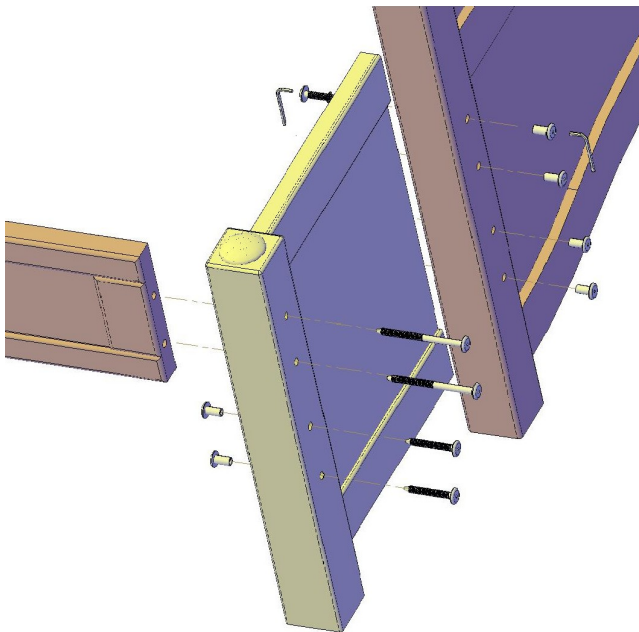
(1) 4/6 slat roll

Extension Kit Option Assembly Instructions

2 person assembly required



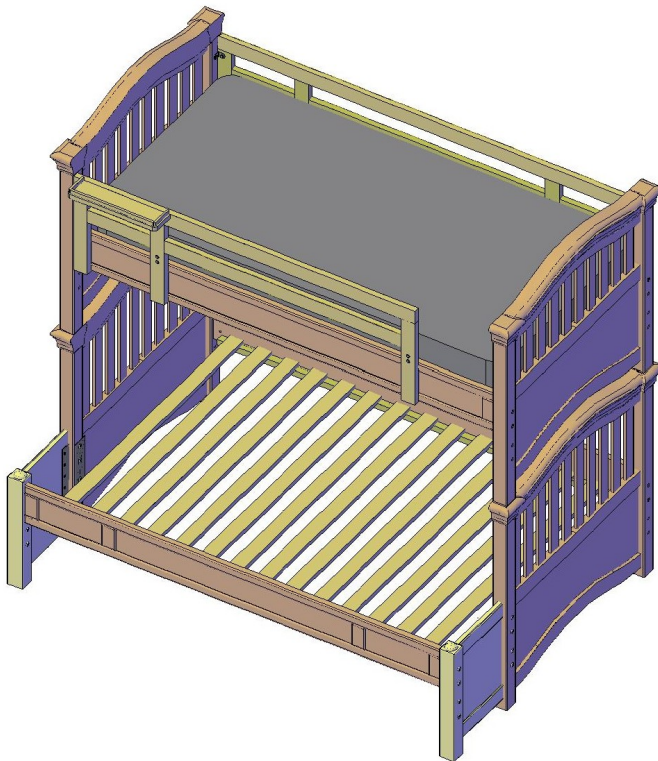
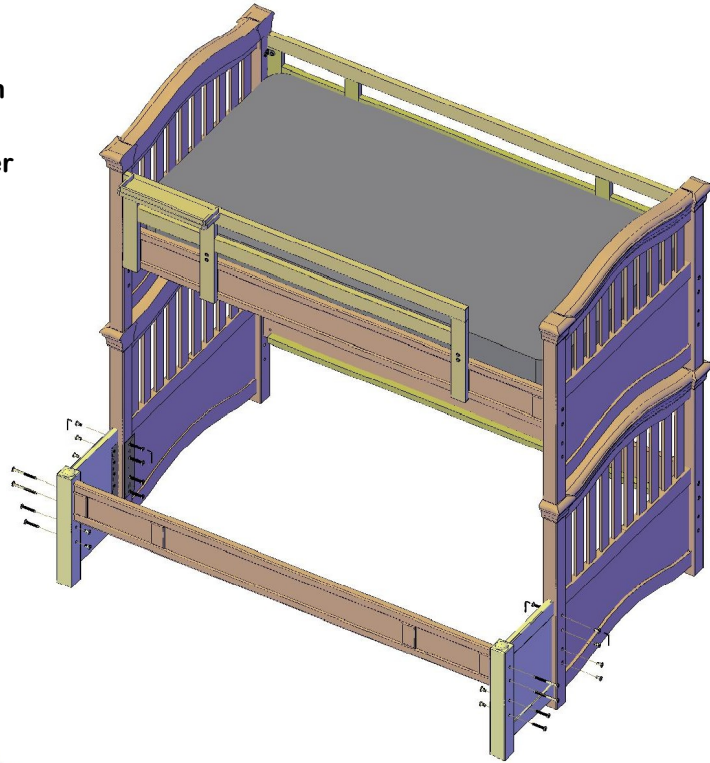
1. Prepare the connector bolts with the spring washer first then slide on the flat washer as shown.
2. Attach the extension with the brackets attached to the lower bed end to be extended as shown with the connector bolts and caps.
3. Follow steps on page 5 for assembly of the side rail. Use the bunk bed assembly bolts provided with the bunk bed hardware.



Extension Kit Option Assembly Instructions

2 person assembly required

The bunk bed will assemble with the extensions in left hand and right hand ends. The bed rail can be set up in the upper or lower configuration depending on under bed options or desired mattress height.

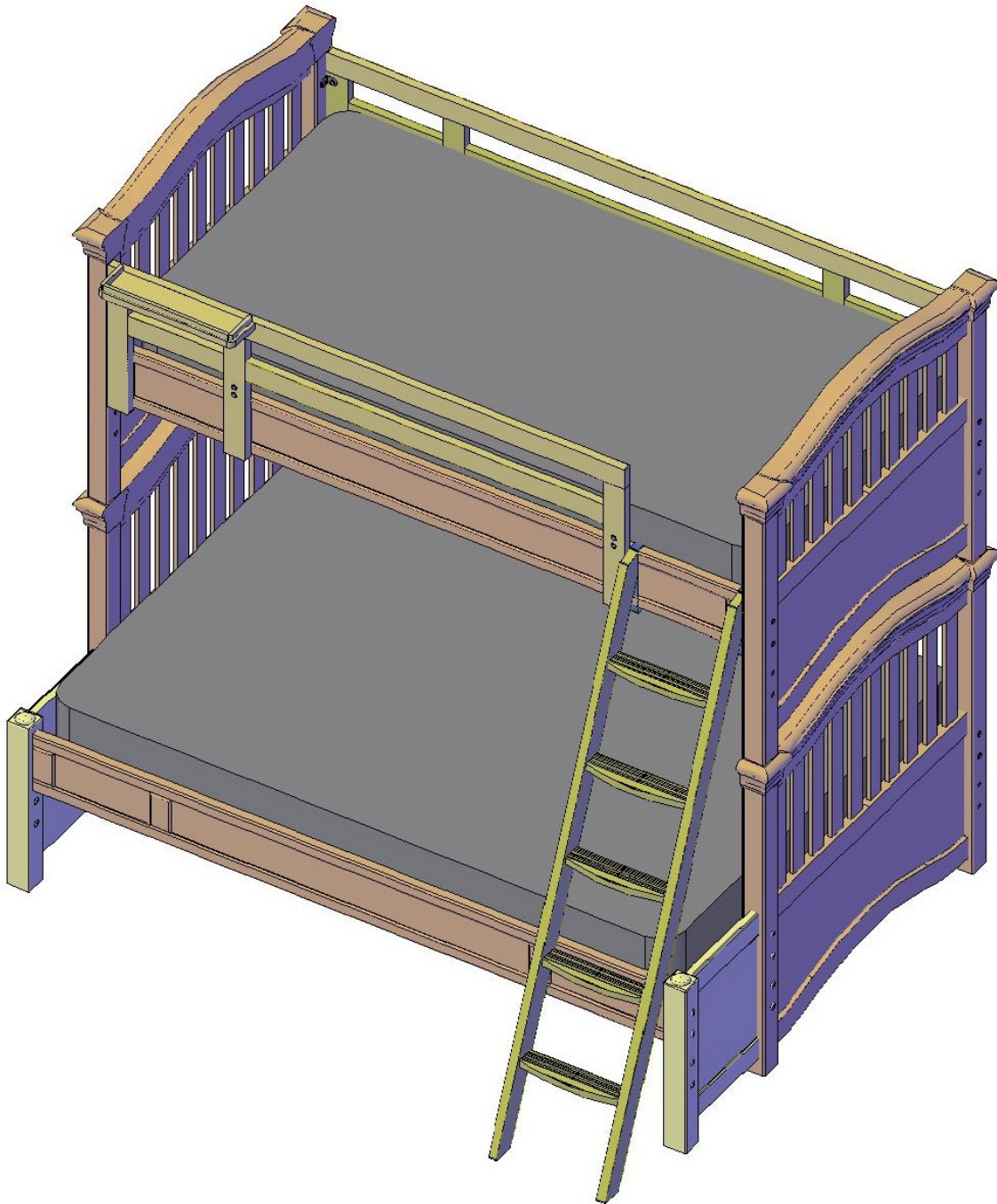


The bottom bunk will use a full size mattress and must use the 4/6 full size slat roll mattress support.

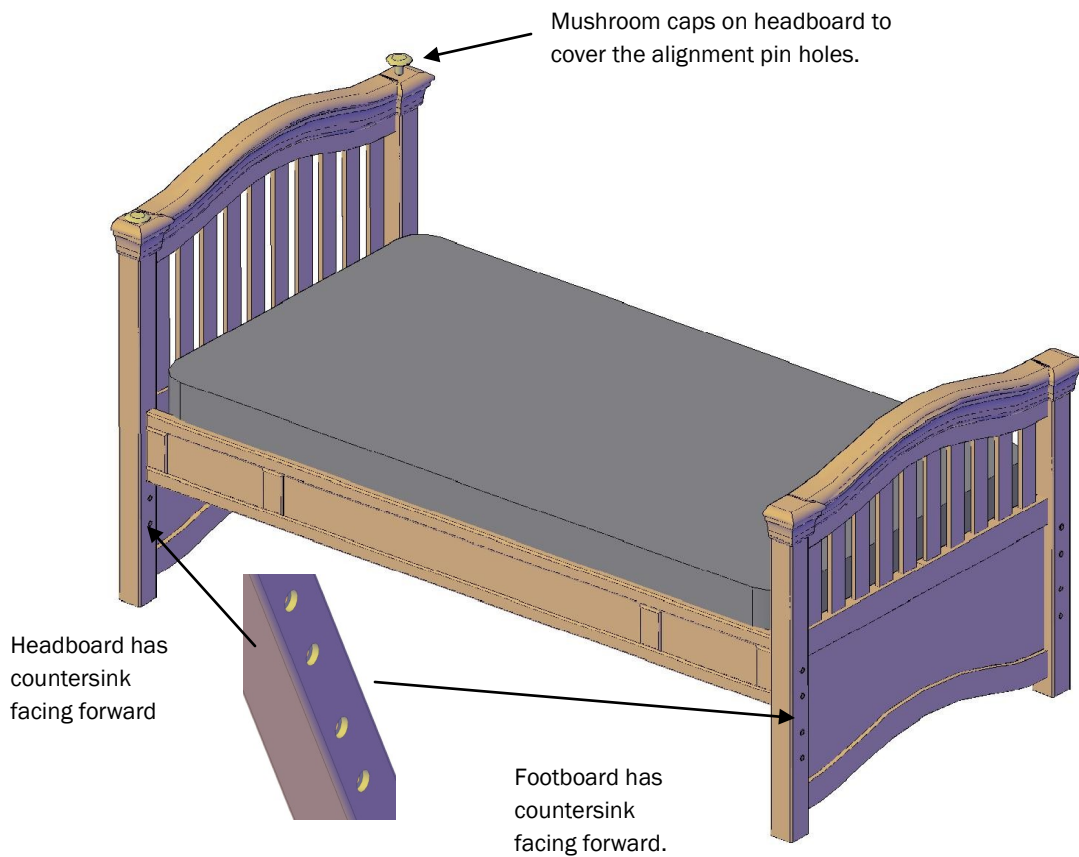
Attach the mattress support with the screws provided following the instructions on page 8.

Extension Kit Option Assembly Instructions

Bunk Bed assembled with the extension kit



Smartstuff bunks will make two twin beds



1. The bottom bunk is a higher panel and is the head board. Rotate the head board so that the countersink holes are on the front side of the bed facing the mattress opening.
2. Use the upper bunk as the foot board and set up with the counter sink holes to the outside of the bed.
3. Use the steps previously show on page 5 and page 8 for assembly of the side rails and the slat roll mattress foundation.
4. Use the mushroom caps provided to fill the holes in the headboard where the alignment pins were used on the bunk bed assembly.

smartstuff™

furniture for kids.

**smartstuff is a registered product
manufactured and marketed by
UNIVERSAL FURNITURE INTERNATIONAL, INC
2575 Penny Road
High Point, NC 27265**